

NEWSLETTER
RICHARDSON COUNTY HISTORICAL SOCIETY, INC.
1401 CHASE ST. - PO BOX 45
FALLS CITY, NE 68355

Website - <https://sites.rootsweb.com/~nericchs>

Email: rchs@sentco.net



Issue #35

Fall 2021

Board of Directors 2021-2022:

Richard Meinzer, President	Rita Seeba, Secretary
Leon Wilhelm, Vice President	Susan Nutzman, Treasurer
John Seeba	Austin Duerfeldt
Richard Zentner, History/Genealogy (zent@sentco.net)	Ann Meinzer (ameinzer@sentco.net)
June Bowers	Jan Deckinger
Matt Beer	Shirley Gormley
Barbara Curley-Fail	Kenny Arnold
Kenny Killingsworth	JoAnn Koso
Norma Thompson, Records/ IT	Terry Stradtman
Contact Information: 402-245-4407 or 402-245-3372	Email: rchs@sentco.net

President's Report

Greetings - With the pandemic, we never knew from day to day if we were opening or closing, if to have meetings or docents, to learning how to keep the museum clean and sterile. We finally decided to close in April, 2020 to protect visitors and staff volunteers. We reopened in April 2021.

The Board decided to make good use of the closure time. Volunteers cleaned, moved and reorganized exhibits, added more lighting and new signage. Volunteers like Joan Zoeller, Jan Deckinger, Norma Thompson, and Terry Stradtman diligently worked a day or two every week. I often would say, "I wonder what the ladies will think of next." I worked with them every work day putting up lights, using the ladder, bringing in outside workers, and running errands.

Some of the new projects completed these past two years are: new lighting in the old kitchen downstairs, removing the old bathroom upstairs and making a quilt room in its place. The work was all done by volunteers John Seeba, Leon Wilhelm, myself and others. A new epoxy floor has replaced the old carpet on the front porch. It looks terrific!

For the April opening this year we sponsored Loretta's Donut Wagon to bring in some new people. It was a delicious experience!!

We received some generous donations this year with the latest being from the Harold & Jo Ann Auxier estate. Donations/Memorials are always welcome and a great way to honor your family.

A future project includes improved access to the AG II Building and a new parking lot. A new ceiling in the auditorium in the main building is needed.

Thank you to all who have contributed through memberships, donations, and memorials. Please continue to giving to help with the upkeep of our buildings. Our Board of Directors continues to use your investments wisely. If you have not paid your 2021-2022 dues, please do so. A form is included in this newsletter for your convenience.

Questions? Please call the museum or leave a message. Have a good year.

Richard Meinzer, Board President

For many years when his wife, Jo Ann, was the docent, retired farmer Harold was the quiet man who could be counted on to hang pictures, vacuum, keep clocks running, and perform other needed tasks. He took many digital photos, downloaded them to a computer, and made prints. He was also Ann's taste tester in Annie's Kitchen.



Harold Auxier
April 16, 1931-July 25, 2021

Featured in State Publication

Our museum was featured in the Sep-Oct-Nov 2021 edition of *Nebraska Ancestry*, published by the Nebraska State Genealogical Society. As submitted by the Tri-State Corners Genealogical Society that meets monthly at the museum, the full page article features a picture of the museum then lists contact, location and visiting information and follows with:

"Bounded by the Missouri River and Kansas, Richardson County was often the first stop for pioneer Nebraskans. From 1850s river settlements of Rulo, Arago, and St. Stephens many traveled west through tall prairie grass and winding river beds to establish new towns and break the ground. Many stayed, and some moved further north or west, so many Nebraskans are likely to have ancestors who spent at least some time in this southeast corner of the state.

The museum has much to offer a genealogist:

- Town and County Histories - many include biographies of founders and residents
- Genealogies - both printed volumes and documents in file folders
- Pictures - photographs of people, places, organization memberships, and businesses
- Atlases - a good source for locating land ownership through the years, many have indexes
- Artifacts - and memorabilia of families
- Churches - histories, membership directories, pictures, and other worship items

- Schools - two-volume set of Rural Schools of Richardson County, class pictures, an extensive collection of high school yearbooks, six boxes of the original school censuses from 1923 to 1990 which list every family in a district and its children, teacher scrapbooks, the stage curtain from the last rural school in the county, a large school bell, desks
- Scrapbooks - WW II years, local politics, the oil industry, clubs and civic organizations, personal ones of family and friends with pictures and extensive collections of obituaries, births, and marriages.
- Military Room - tributes to veterans through pictures, uniforms, stories, and display items
- Railroads - Missouri Pacific and Burlington Railroad displays
- Newspapers - many boxes and binders of original copies of county publications
- Cemetery Indexes - birth/death dates and tombstone transcriptions from over 55 burial sites compiled by the Tri-State Corners Genealogical Society, and the Gone Home Cemetery Index Book for Holt County, MO."

Many who visit the museum are indeed doing family research. When they call ahead, we have time to pull together documents, resource books, and items from our displays pertaining to their family. Often Richard Zentner comes in to the museum to share his research with them.



The carpet on the porch had become a hazardous eyesore. We had it replaced this summer with a welcoming epoxy floor covering. Local contractor, Froeschl Flooring, was hired to cover the entire 50' x 12' area and steps.

How can you display the advertising yardsticks that were so popular and hung in many farm kitchens through the years?

Google it? Pinterest? Etsy?

We found all sorts of ideas, but none that seemed right for museum use.

Answer: Richard Meinzer suggested using Venetian blinds. We did not have any old ones, but we found that a mini-blind from a local hardware store worked just fine. See the yardsticks in the AG I Bldg. with other commercial and farm exhibits.

Also new in that building is a heavy-duty three-shelved stand holding eleven vintage personal and business typewriters. Cash registers, check writers, adding machines and other business office equipment complete the display.



County 1921 Graduates:

Falls City		Sacred Heart		Salem
Arnold, Merle Barton, Daisy Bippes, Martha Brown, Dewey Coatney, Robert Coon, Virgil Fergus, John Fisher, Carroll Foehlinger, Opal Fouts, Xenia Frehse, Marie Heins, Helen Hilgenfeld, Herbert	Hoffmann, Carl Hoy, Rosa Humbarger, John Landrigan, Leonard Lichty, Mildred McManus, Ola Metz, Worth Mosiman, Dorothy Mosiman, George Parsons, Wilma Peck, Bernice Pruesse, Elsie Pribbenow, Henry	Ratekin, Clarence Ratekin, Hazel Scott, Marie Shubert, Irma Sperry, Omer Sutter, Louise Tibbets, Edward Tiehen, Sylvester van Hoesen, Vivian Wheeler, Audrey Wittrock, Edward Yort, Bessie	Ashe, Philomena Babb, Fern Bolejack, Marvin Dolan, Rose Gregor, Elizabeth Kirk, Lucille McCarthy, Helen Murphy, Ann Murphy, Clara Schawang, Arthur Weber, Irma	Babb, Dorothy Browne, Margaret Heskett, Fred Jones, Ruth Jones, Helen Morehead, Charles Oakes, Otto Porr, Esther Reed, Lucille Richardson, Fern

Humboldt		Dawson	Stella	Shubert
Alberts, Lillie Carsh, Hazel Davenport, Florence Dean, John H. Faust, Hattie Gist, C. Preston Glathar, Opal Green, Huldah Harris, Helen E. Harshbarger, Rose Hill, Annice Howe, Holman	Hubka, Anna Hunter, Merle E. Kanel, Velma Kuper, Myron A. Lehnherr, Ione Lydick, William Dale McMaster, Ethel Miner, Minnie Moritz, Lena Ninger, Bohumil E. Smith, Blanche Snethen, Esther	Adams, Cleo Duryea, C.C. Farrell, Henry Heim, Wesley McGuire, Veronica O'Grady, Ella O'Grady, Mike Riley, Hugh B. Wuster, Erva	Anderson, Whilma Hensley, Earl Hicks, Rosa Higgins, Audrey James, Maude McGinnis, Earl McMullen, Richard McNeely, Cleo McQueen, Edith Shellenbarger, Raymond Paul, Dorothea	Fish, Ruby * Slagle, Glenn* *11th Grade Grad. <div style="border: 1px solid black; padding: 5px; text-align: center;">Verdon</div> Bloom, Myra Burns, Nellie Jorn, Mable Sloan, Neal Steadman, Helen Veal, Irene Voils, Clyde Weaver, Thelma

We continue to work on displays and binders of Richardson County school class pictures and documents. Our yearbook collection continues to grow. Thank you. We have scrapbooks and photos from past teachers - Lucille Buckminster, Mary Kister, Wilma Heiser, Camilla Banks, and Mary Eis, to name a few. A large Rulo school binder compiled by Lela Palmer is a treasure. Nellie Reavis McCleery and Arlene Heck Towle kept large scrapbooks of their 1920s high school years.

Recently acquired yearbooks: Shubert HS : 1955, 1956, 1957, 1958
 Falls City HS: 1936, 1940, 2021
 Salem HS: 1958, 1960 from Dan Gentry family
 Verdon HS: 1953, 1954, 1955 from Barbara Sheehan

The Tri-State Corners Genealogical Society is compiling lists of all county HS graduates.

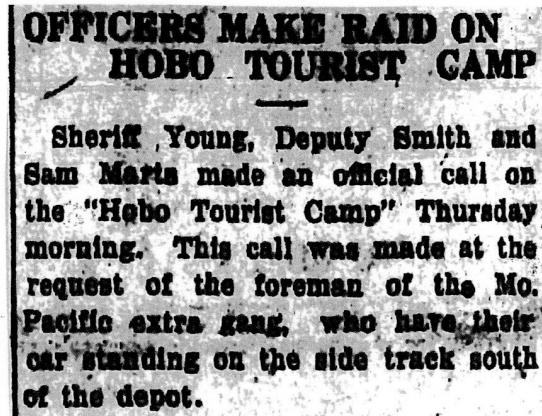
Richardson County Tourist Camps

In the late 1910s and 1920s as roads improved and the public embraced automobiles, tourism increased. This call of the open road necessitated an increased demand for travelers' accommodations.

Tourist camps sprang up all over the country, and Richardson County was no exception. The concept boomed in the county. There were at least ten scattered across the county. The early ones consisted of basically open space in which to set up a tent and a campfire.

Falls City's city park hosted one in 1922. The city provided space without charge, first come, first served. This amenity soon got out of hand, as hobos and tramps congregated and bothered legitimate tourists and park visitors. The city then instituted a nominal fee causing the hobos to pass it up. They went somewhere else.

The hobo "brotherhood" started their own "tourist camp." In April 1924 Sheriff Young, Deputy Smith, and Police Chief Sam Marts were called to the railroad yard by the foreman of the MOPAC to disperse "about 20 bums" who were demanding food and bothering a railroad work gang. After a "very classy exhibition of gun work" by Marts, the bums hurriedly departed.



The town of Dawson had three tourist camps. One was operating in 1924 a couple of blocks from town at the base of a bluff. The other two started later, apparently after the first closed. Jack Clark planned his about mid-December 1929 with a restaurant and a filling station, to open in the spring of 1930, but Jesse Arington opened his, Camp Trivera, on Dec. 21, 1929. It featured a Texaco station, a restaurant, and a grocery store along with the campground. His was just south of the Dawson's depot.

Harry Guilliams saw an opportunity near Verdon to go one better, going all-out to build a camping, and amusement, park in 1925. It included a dining hall, shooting grounds (used by the Falls City Gun Club), a "gas filling station," and even a ball park. His facility was still operating in 1932 four miles north of Coon's corner.

In 1928 the Falls City Daily News reported that a tourist pay camp was being established two miles south of that town by George M. Jones. This was just north of where Breezy Hill restaurant would be later. Six cottages (12' X 12') were being built with attached garages. There would be a lunch room and a filling station. It would be called "Porgie's Camp," (from his nickname "Georgie Porgie"). During its time it served meals and in season, sold fireworks. His camp also had a dubious reputation as its owner

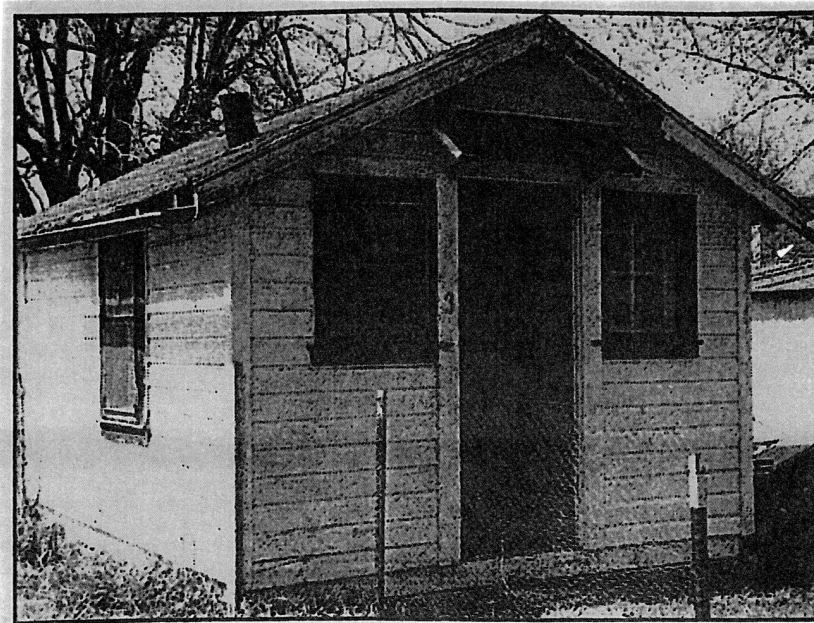
was often raided for bootleg alcohol. It was put up for sale on what was known as "Breezy Hill" in 1937 and was sold the following year to Fritz Schroedl.

In 1929 Falls City resident George Newton (Newt) Wertz got into the camp business, perhaps inspired by "gypsies" camping on his land two years earlier. His land was just south of town on Pony Creek. He established his tourist camp and filling station, but soon had a problem – the creek flooded and his camp became an island. He waded the creek to tell county officials that "by golly" something had to be done about it. His sister Mary got so disgusted she left for Missouri. His camp was still in use in 1930, but closed soon after.

Also in 1929 the News issue of Sept. 12 announced a “new and up-to-date tourist camp” was now being built at 21st (then Highway 73) and Schoenheit Streets by Tom Poteet. It would eventually consist of ten cabins with coal oil stoves – no tents or campfires for him! And a communal shower/toilet building. His camp would be called “Uncle Tom’s Cabin Camp” and would become Falls City’s first “motel.” The customary filling station was planned but was soon abandoned because the One-Stop Service Station was nearby. The Falls City Tribune of Sept. 6, 1929 reported that “his location is ideal” and “these cabins are sure to find favor with the traveling public.”

Through the years, the cabins saw many different kinds of people and events: Camp Fire girls from Stella, palm readers, a coal oil stove explosion and fire, an attempted murder, a Missouri River surveying party, car thieves, check forgers, and people looking for work. One of those job seekers stayed in Uncle Tom’s Cabin # 3.

Cabin # 3 As It Appeared
In 2001 Near South School



Uncle Tom’s Cabins was in business until 1951 when it was sold to Ray Novak for \$15,000 who would soon build houses there. The cabins were sold or demolished. One was bought by John Wizezorek for use as a fishing cabin at Big Lake, another is still in use as a shed near South School (Cabin # 3). Earlier an unused building from Uncle Tom’s was sold in 1935 to be used as Carter’s No. 2 Grocery Store at 7th and Morton Streets. We may remember it as Maze’s sien shon.

In 1929 Stella also had a tourist camp. In October of that year, its camp gave a place to stay to a family “in an old flivver” on their way to California. This was reported in the Falls City Journal, but nothing else about the camp or who ran it.

In 1930 Edward Kuhlman was operating a tourist camp north of Humboldt in Franklin Precinct. It was still in use in 1931 and also had a filling station. Kuhlman had a second place at the junction of Highways 75 and 4, the Junction Service Station, where he planned to add some tourist cottages in the spring of 1931.

In the 1930s there were at least two other camps: Mike’s Camp at Rulo and Mason’s Camp at the mouth of the Nemaha, but it is uncertain if they provided campgrounds or were just restaurants.

Bill Rowan



Enlarged Church Display in its New Location

A recent Texas visitor was able to see the cross and Bible stand from the former First Congregational Church of Verdon where her ancestor, Rev. J.L. Fisher, began his ministry.

Volunteer Appreciation Tea

In June, the RCHS Board thanked Museum volunteers for their time and service. At the event, Joan Zoeller was presented a Heritage Hero Award from the History Nebraska (formerly the Nebraska State Historical Society) Board of Trustees. When she arrived for her shift as a docent that afternoon, she found a room full of other volunteers, her family and friends. She was truly surprised! Katherine Endacott from the Trustees presented Joan with a pin and Certificate of Appreciation for all she has done to preserve our county and state heritage. Congratulations, Joan.





Show three men an unused bathroom with turquoise fixtures, express a wish for a few rods to display quilts and within one month the room was gutted and transformed into a beautiful, bright Quilt Room. Jan Deckinger and Joan Zoeller placed the quilts on the protective-tissue wrapped PVC rods.

Quilts

Submitted by Susan Nutzman

A quilt can be explained as a cloth sandwich with a top which is usually the decorated part, a back, and a filler in the middle. Under the general term of *patchwork* are three different types of quilts: (1) the plain or whole cloth quilt, (2) applique quilt, and (3) pieced or patchwork quilt.

Thirty-five quilts are on display, most of which are in the newly created Quilt Room located upstairs at the museum. Previously the quilts were found throughout the museum but now most are preserved correctly in a room of their own. The help to create the outstanding room from an unused bathroom was donated by board members John Seeba, Richard Meinzer, and Leon Wilhelm. Jan Deckinger, Joan Zoeller and Norma Thompson added background information on each one.

Among the beautiful old and new designs on display is this Bicentennial Banner with thirty fabric painted squares created by children in Falls City Public School classes in 1976. A milestone in American History, the Bicentennial celebration of 1976 was also a turning point in the history of quilts in America. The quilt became popular as a means of expressing national pride and achievement, and a powerful reminder of our past. The sashing of stripes and cornerstones of stars piecing and finishing is unknown. Also unknown is who built the display case. This is in the AG I Building Elementary School Display Corner.

(Note: Each block has the student artist's initials and classroom. We know most, but still have four unknown artists and a couple of unknown classroom teachers.)



A colorful quilt pieced by Ramona Oakes' mother, "Moonie" Schwer, was donated after the death of Mrs. Schwer's grandson, Charles Oakes. The top came with other artifacts donated to the museum and was finished and quilted by Mildred Fritz, museum volunteer.

Some quilts are still hung throughout the museum. Hang tags label each name, maker, and donor, if known. A large bright pinwheel quilt is hangs behind the displays in the northwest corner on the main level. Pieced by Opal Schneiderwind between the ages of 92-94, and then quilted RCHS volunteers.

Displayed on a bed is a 1940 Falls City map quilt. It is quite interesting to compare with Falls City town squares today. Railroad tracks and original buildings are depicted on the streets of the map.

We have an old buggy quilt that was popular 1885-1920 that was made by the donor's grandmother, Fannie Hon Klossner and great grandmother, Fannie Barton of Hon and donated by Mary Eis Klossner.

There is a diamond friendship quilt donated by Lena Last Hanika that was completed in 1930 and donated by Rita Mae Rawley Neville.

Mary Petrashek Eis pieced a quilt top made out of very old pieces of material. Betsie Eis made the comforter out of it in the 1940s using mash sacks for backing and front piece protection.

Several embroidered quilts are located on the maid's bed and another bed upstairs.

At the age of 93, Caroline Egner Ketter, Arago pioneer woman, crocheted a pillow top that she donated. A popular quilt pattern today is found on a pretty cathedral window pillow.

Beautiful workmanship is shown in a Texas Star quilt on an upstairs bed that was made by Mrs. Herman (Mary Goll) Bauer, in the quilt pattern named either "Seven Sisters" or "Seven Stars" by Mabel Bauer (Mrs. Emil) Hoemann, and in a double wedding ring child's quilt.. All three were donated by Darlene Hoemann, granddaughter and daughter of the creators.

A "Princes" or "Princess" Feather quilt made by Mary Catherine Boyd Walker for her granddaughter, Kay Walker Rodehorst, is over 120 years old features bright colored fabric that is such a favorite today.

Donated by Roy & Naomi Bahr is a friendship quilt made by the Cottage Grove Kennington Club near Verdon in 1930 and given to them. Another 1930s friendship quilt made by Verdon neighborhood ladies donated by Gladys Mayfield Tulloch Thorp was backed by Lily Mayfield's 1912 wedding dress.

Several "crazy" quilts, both of wool and silk with elaborate embroidery are in the museum. Mary Elizabeth Martin possibly made three. One displayed on a chair back near the John Falter artwork has many different stitches.

Another crazy quilt comforter with comforter protector was created by Kate (Mrs. C.M.) Reagan and donated by her granddaughter, Carolyn Huston Joy.

A pink six-petal flower quilt made by Emma (Mrs. Cecil) Prater, and a Flower Garden quilt believed to be made by Freda Meinzer Foehlinger, were donated by Richard & Ann Meinzer.

Pieced during the Civil War, a dark Flower Garden quilt made by Sarah E. Powell (1844-1915), was donated by Gertrude Sare Sperry, her daughter.

A "Rose of Sharon" quilt from the early 1920s was made by Francis Miller and given to donors, Martha and Margaret Thomas, Wymore, NE, the daughters of Dr. Charles Wesley and Emma Grace Gantt Thomas in 1927. The maker of the quilt was a sister of Savilla (Miller)(Mrs. Elias) Maust, pioneer residents of Richardson County in 1870. Dr. Wesley once practiced in Verdon.

A red and white friendship quilt was made by the Immaculate Conception Catholic Church Altar Society as a fund raiser. It was won by Zeirna Darveaux Snider and later given to Rosalee Zvolanek Simmonds who gave it back to the society in 1995. A sealed bid by Henry & Gertrude Kanaley Majerus family members, who had pooled their money, won the quilt in 1996. Shirley Sells Gormley for the Majerus family, in turn donated it to the RC Historical Society as a family remembrance.

Dated in the early 1800s is a red and white woven spread of home grown flax and wool that was hand spun that was made by the great grandmother of Mrs. H.A. Pence of Cape Cod, Mass. It was donated by Mrs. H.A. (Jennie Simanton) Pence (1877-1962)

Susan Catherine Schultz Nedrow (1835-1894) made a navy and white woven wool coverlet which has the pattern on both sides in the mid to later 1800s. It was donated by the Nedrow family.

Log Cabin quilts are easy to recognize. The museum has several but not much is known about one with a gold border and black back or another with a red border and brown back.

A black and brown embroidered and tied comforter was donated by Gladys Grush for the Grush family.

A very old and beautiful Courthouse Steps Log Cabin (mini strips) was made by Emma Hill, mother of donor, Almeda Hill. It is unusual as it has a decorative floral backing..

A unique heavy quilt of wool 3-D six-pointed star blocks created by members of the Culley family in the 1890s was donated by descendants recently. The wool came from sheep raised on the Culley sheep farm north of Falls City. It hangs on the stairway bannister.

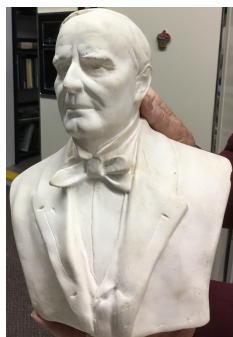


Quilters today often label their quilts. Too bad earlier quilters did not.
Every quilt has a story..... Come see the RCHS's new quilt room!

New Items

- Gail Gerlt sent us Shubert History, Ballad of Barada by Lucia Ahern, Thrills, Chills & Spills by Bill Schock, C is for Cornhusker, illustrated by Sandy Appleoff, and other items.
- Pamela Martin Petty sent a large box containing Martin family memorabilia pertaining to Richardson County and Falls City High School. Her father was Philip Martin (1916-1996), son of the John & Carolyn Martin known for their Martin Photography Studio.
- Twenty-four piece set of Haviland China used by the Jenne family that had a store in downtown FC. donated by Sue Strauss Slater.
- ice cream freezer, half-bushel baskets, and other items from Verna Mae White
- two heavy wire apple baskets from Towle Orchard donated by Dennis Merz
- six map books from Harold & Jo Ann Auxier estate
- Naval and Masonry books from Bill Rowan
- Reprint of 1936 Dawson Herald History of Dawson donated by Penn. Colony of NE Historical Society.
- Heavy glass punch bowl with pedestal belonging to great grandfather of Charlene Schuetz, the donor.

This is not a complete list, but know that every donation is important to us.



Do you recognize this mystery man? We were given this bust, but cannot identify him. Certainly looks distinguished, does he not?

Memorial Donations

In honor of Marjean Werner, Maxine West Gross, Gary Foster, Billy Marrs, Spike Bennett, Nellie Ann Inks, Bonnie Zentner, Kathy Mumm, Marceline Huettner, Bernice Bachman Adams, Martha Bearce, Joyce Curry, Thelma Kelley, Harold Auxier, Lloyd Bindle.

Our military room wall shows off this bright red silky 4' x 6' service flag with 129 blue and gold stars. The Schaible families presented it to the First Methodist Church in 1945 to honor WW II veterans with connections to the congregation. The seven gold stars at the top are in memory of the ones who died in service.

Robert Warren Schaible William M. Keeling
 Berkeley LeRoy Chesley Dale Kenneth Prater
 Floyd Eugene Prater Col. Dr. John Lloyd Schock
 Lt. Col. Dr. Glenn Faucett

Each name was recorded in a book and the names from it are posted beside the banner.



This farm wagon was sold by Loucks & Jones which business was at 17th & Chase and later 17th & Harlan. Donated by Albert & Betty Gruber, it was restored by Wyatt Martin for his Eagle Scout



project. Note the attached seeder. There is another seeder from Tom White in the wagon bed and a horse fly net hanging on the side. A hay loader, also from the Grubers, sits behind.

This nice Baldwin organ needs a new home. Interested? Contact a board member.

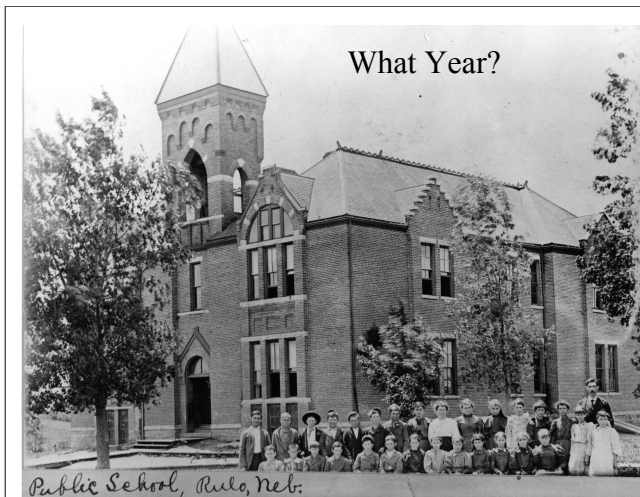


This and past newsletters are available in color on website: <https://sites.rootsweb.com/~nericchs>

We invite you to visit the museum to see the many improvements and updated displays. We always need volunteers, and suggestions are most welcome. Contact a board member. Consider having your group meeting at the museum or arrange a tour. 'Closed' means that no docents are scheduled, but we will gladly arrange a showing at other times.

BULK RATE
U. S. Postage
P.A.I.D.
Permit #39
Falls City, NE 68355

Richardson County Historical Society
P. O. Box 45
Falls City, NE 68355



Rulo School - We want to locate pictures and lists of Rulo High School graduates.

This picture is from a large binder of Rulo Dist. #52 pictures compiled by Lela Palmer.



Sunbonnet Sue quilt popular locally in the 1940s-60s. Do you know the donor? We do not.

The dark Flower Garden quilt was pieced during the Civil War.

Support for mailing this newsletter graciously provided by Falls City Care Center.